

Hilton Bayfront

PRESIDENTIAL Suite Specifications

RIMS 2016 Annual Conference & Exhibition

Presidential Suite – (1) available from 4/9 – 4/13

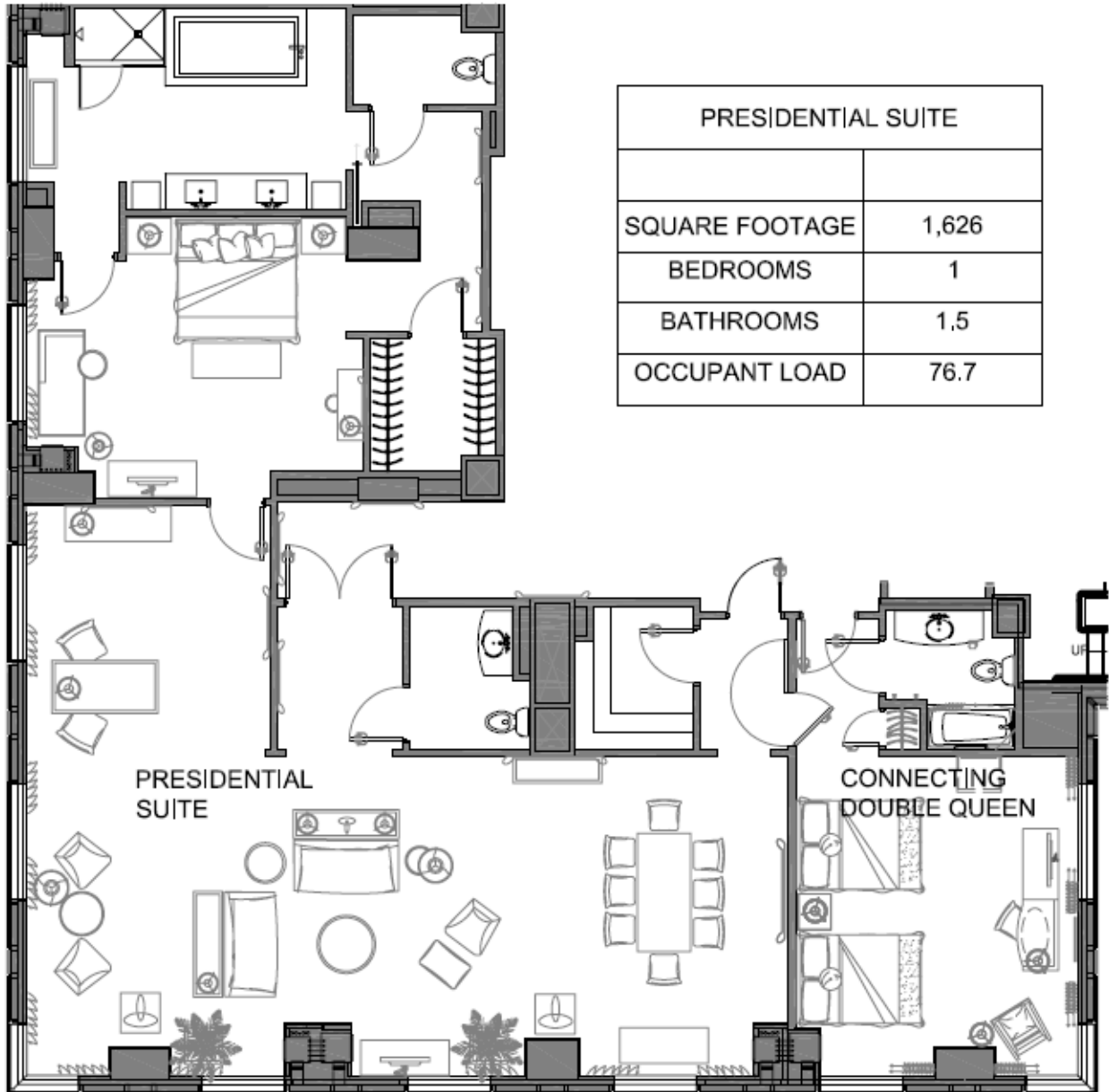
- Suite measures 1,626 square feet
- King master connector
- Double/double connector
- Dining or conference table for 8
- Large windows with views of the City and the Bay
- Hospitality - 76

Rate: P + 1: \$1,776.00
P + 2: \$2,025.00

Diagram appears on the next page.

Hilton Bayfront PRESIDENTIAL Suite Specifications RIMS 2016 Annual Conference & Exhibition

Available from 4/9 – 4/13



Hilton Bayfront

EXECUTIVE Suite Specifications

RIMS 2016 Annual Conference & Exhibition

Executive Suite – (2) available from 4/9 - 4/13

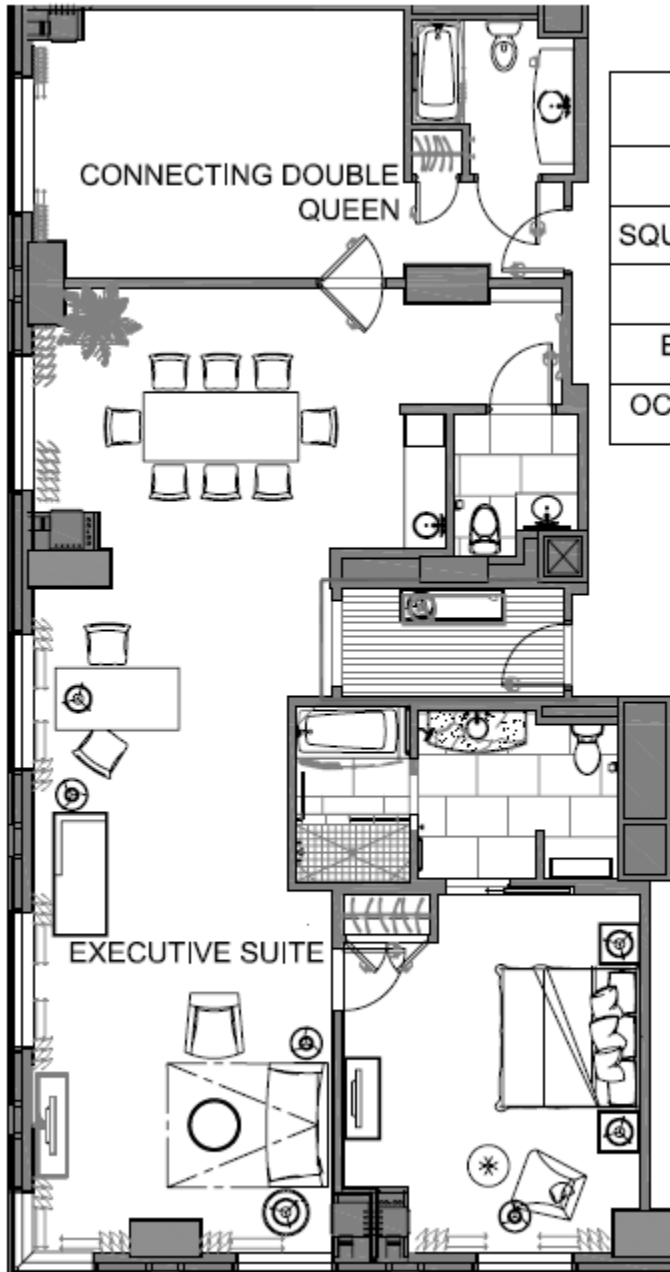
- Suite measures 1,086 square feet
- King master connector
- Double/double connector
- Murphy bed in parlor
- Dining or conference table for 8
- Large windows with views of the City and the Bay
- Hospitality - 54

Rate: P + 1: \$595.00
P + 2: \$844.00

Diagram appears on the next page.

Hilton Bayfront EXECUTIVE Suite Specifications RIMS 2016 Annual Conference & Exhibition

Available from 4/9 - 4/13



EXECUTIVE SUITE	
SQUARE FOOTAGE	1,086
BEDROOMS	1
BATHROOMS	1.5
OCCUPANT LOAD	54

Hilton Bayfront

HOSPITALITY Suite Specifications

RIMS 2016 Annual Conference & Exhibition

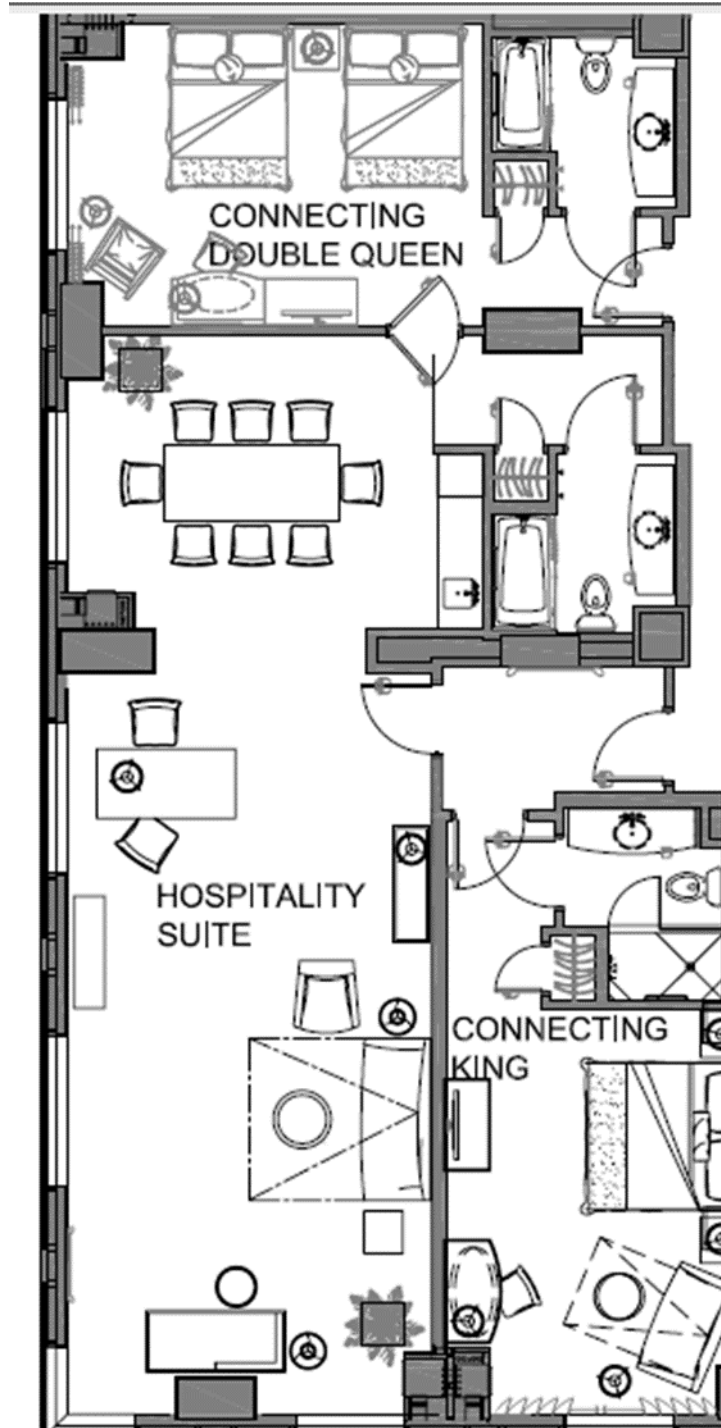
Hospitality Suite – (16) available

- Suite measures 780 square feet
- King master connector
- Double/double connector
- Murphy bed in parlor
- Dining or conference table for 8
- Separate parlor bathroom
- Large windows with views of the City and the Bay
- Hospitality - 52

Rate: P + 1: \$416.00
P + 2: \$664.00

Suite diagram appears on the next page.

Hilton Bayfront HOSPITALITY Suite Specifications RIMS 2016 Annual Conference & Exhibition



Hilton Bayfront

JUNIOR Suite Specifications

RIMS 2016 Annual Conference & Exhibition

Junior Suite – (9) available

- Suite measures 524 square feet
- King master connector
- Full size sofa bed
- Dining or conference table for 4
- Separate parlor bathroom
- Large windows with views of the city and San Diego Bay
- Hospitality - 10

Rate: P + 1: \$257.00
P + 2: \$514.00

